

20. MINERAL SPRINGS AND GOLD MINING RELICS

Grade: *Medium* | Length: *16.0 km* | Duration: *4.5 hrs*
 Style: *circuit* | Total uphill: *400 m* | Gradient: *short hills to 20%*
 Path: *well formed tracks with some off-track*

Introduction

This walk visits the Vaughan Mineral Springs picnic ground on the banks of the Loddon River. Alluvial gold was discovered there in July 1851 and with an influx of Chinese miners a township called The Junction was formed together with a market garden. By the end of the nineteenth century gold mining had declined in the area. However mineral springs were discovered in 1910 and the area became a popular destination for health and recreation. Today mineral spring water can be sampled in the springs. The Tubal Cain mining complex with its horizontal chimney, dam, building ruins and several open shafts are also visited along the track.

Getting there

From the Base (Hepburn Primary School) turn right onto Main Road and follow this road east then south for about 4 km to a roundabout in Daylesford. Turn left onto the Midland Highway (A300) for about 2.2 km then turn right onto the Daylesford–Malmsbury Road (C316) and stay on this road for 950 m to Porcupine Ridge Road. Turn left and follow Porcupine Ridge Road for 18.1 km, the last 7 km of which is unsealed, to the junction with Helge Track and the start of the walk.

Preparations, Precautions & Hazards

Most of the tracks are vehicle tracks and can be very slippery in wet weather. Off-track sections and ill-defined tracks along the water race need care due to high grasses with the risk of snakes. At the Tubal Cain mining complex there is a line of deep open shafts parallel to the track. Boots are essential on this walk, and gaiters and walking poles are recommended.

Facilities

There are toilets and picnic tables at Vaughan Springs picnic ground

Walk Description

Start the walk at the junction of Porcupine Ridge Road and Helge Track (Grid Reference (GR) 522803) and head north-east along Helge Track. The track winds for 1.2 km over boggy areas and rough ground to the intersection with the Great Dividing Trail (GDT) at Sailors Gully (GR 532804). Continue on Helge Track for a further 1.5 km until it meets Italian Hill Track at GR 541811. Turn left onto Italian Hill Track and go uphill 1 km to the slate quarry at GR 538821, which is a few metres from the track on the left hand side.

Continue on the track descending to the Loddon River and then ascending on its left-hand side. At GR 533826 walk north-east off-track for 1 km. Follow along an old fence line and then north-east along the ridge until it reaches a knoll

Continue north-east along the ridge to the water race along the Loddon River (GR 540832). Walk a further 20 m



Tubal Cain Horizontal Chimney

towards the Loddon River and, depending on the water level, cross it and arrive at Glenluce Springs. Return back to the water race and turn right (west). Walk along the water race to a fence (GR 532834) and turn right into a grassy area and walk between an old orchard and the river. Go back to the water race, which at GR 528833 meets the GDT 2.2 km from the start of the water race. Walk on the GDT for 200 m north and cross over the Loddon River on the weir wall to the Vaughan Springs picnic ground. From the picnic ground walk 500 m north-west to the Chinese Burial Ground. Retrace your steps via the GDT (south) for 900 m to the junction with Italian Hill track (GR 528829). Continue south on Gurr Track until the GDT turns off Gurr Track at (GR 526821).

Turn left (south) on the GDT and walk for 1.4 km to reach the Tubal Cain mining complex (GR 529810) on the right, and a dam on the left. Walk another 100 m and take the right track, which is the water race along Sailors Gully. The GDT meets Helge Track after 700 m. Turn right (west) onto Helge Track and retrace your steps to the start of the walk.



Vaughan Springs Picnic Area

This Walk Sheet describes a bushwalk, part of Bushwalking Victoria's Federation Walks 2015 program in the Daylesford and Hepburn Springs area on 24-25 October 2015. The host clubs for this event are Bayside Bushwalking Club and The Great Dividing Trail Association. Bushwalking Victoria, the host clubs, their members and walk leaders cannot accept any responsibility for errors, omissions or changes to the circumstances on which this information is based, nor can they accept responsibility for any loss or injury sustained by any person using this Walk Sheet.

Bushwalking Victoria: www.bushwalkingvictoria.org.au/

Bayside Bushwalking Club: www.baysidebush.org.au/ Great Dividing Trail Association: gdt.org.au/

20. MINERAL SPRINGS AND GOLD MINING RELICS

Maps

Vicmap Topo 1:25000 A0
7723-4-S CASTLEMAINE SOUTH

Vicmap Topo 1:30000 A4
7723-4-2-1
7723-4-2-2

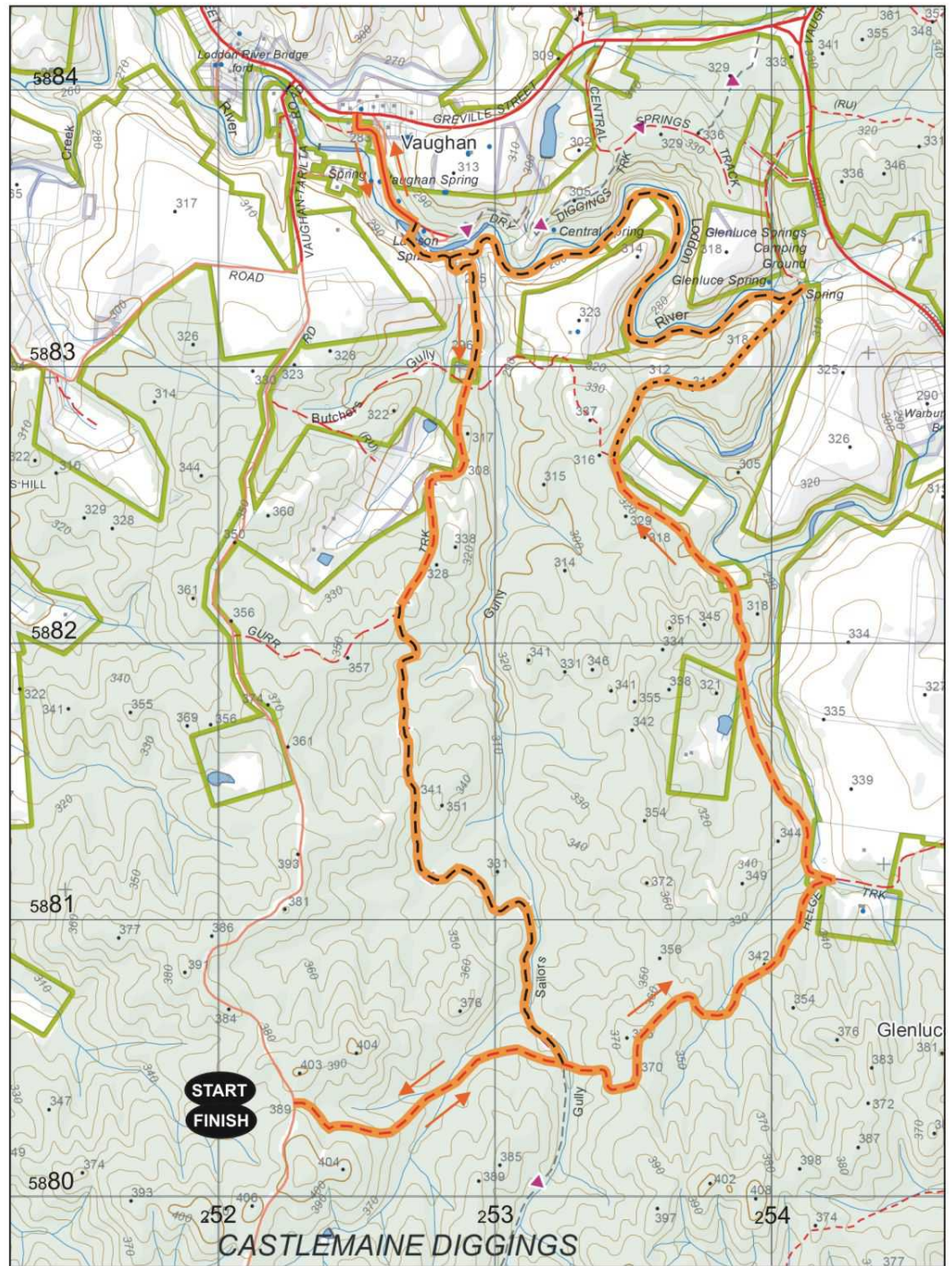
GDA94 / MGA Zone 55

Walk Surfaces	
Road	
Vehicle Track	
Foot Track	
Off Track	
Walk Route	



Map base sourced from Vicmap, Department of Environment, Land, Water and Planning (DELWP). Copyright © The State of Victoria, DELWP, 2015

The State of Victoria and its suppliers do not warrant the accuracy or completeness of information in this publication and any person using or relying upon such information does so on the basis that the State of Victoria shall bear no responsibility or liability whatsoever for any errors, faults, defects or omissions in the information.



This map is provided solely as a guide to the subject walk. The map is not intended to be used as a substitute for the applicable Vicmap Topographic map(s). Vicmap Topographic maps may be purchased in printed form from map shops and digital (PDF) maps may be purchased online at <http://services.land.vic.gov.au/maps/imf/search/Topo30Front.jsp>

