

19. LAKE DAYLESFORD TO BRYCES FLAT

Grade: *Easy/Medium* | Length: *14.0 km* | Duration: *4.5 hrs*
Style: *circuit* | Total uphill: *250 m* | Gradient: *short climbs to 20%*
Path: *Unsurfaced earth tracks*

Introduction

The walk follows Wombat Creek and Sailors Creek from Lake Daylesford to Bryces Flat walking on the west side of Sailors Creek and returning to Lake Daylesford on the east side. The undulating track narrows in places to single file and passes gold diggings, old huts and deep mine shafts through pleasant bushland with occasional sclerophyll forest. Mineral springs may be sampled en route.

Getting there

From the Hepburn Primary school turn right onto Main Road and continue in an easterly direction until it turns right (south) and becomes C138. Continue for about 4 km to Daylesford. Go straight ahead through the second roundabout and turn right into Bleakley Street. Cross the causeway and turn right immediately into the Lake Daylesford car park (Grid Reference (GR) 464627).

Preparations, Precautions & Hazards

Most of the track is single file and slippery if wet, requiring boots. Sections are on cliff edges. Care must be taken when crossing the Midland Highway at the Twin Bridges as there is no bridge, tunnel or defined pedestrian crossing.

Facilities

There are toilets and picnic tables at Tipperary Springs and toilets at Lake Daylesford car park.

Walk Description

Start the walk at Lake Daylesford car park walking on the track on the south side of the lake with the lake on the right. Pass rows of concrete seats on the left and descend by the dam wall following the track to Central Springs. With Wombat Creek on the left follow the track via Sutton Spring to the Midland Highway. Carefully cross the highway to Twin Bridges picnic area and the junction of Wombat Creek with Sailors Creek. Cross the bridge to the west side of Sailors Creek and follow the track north. After 500 m, at an unmarked track junction keep left and do not go down the spur and cross the creek. Follow the track along the hillside to Tipperary Springs on the right (GR 449638). This is a good spot for morning tea. The spa water here is reputed to be the best in Daylesford. Returning to the west of the creek continue north on the track 3.3 km to Bryces Flat (GR 448659). This is a good spot for lunch. There is an abundance of evidence of gold diggings along here. After lunch cross the creek to the east bank and turn south (right) on the track to return to Tipperary Springs on the opposite side of the creek. From Tipperary Springs walk a short way up the sealed road and turn right onto the track which is indicated by a sign. Remaining on the east side of the creek continue on the track to Twin Bridges. Retrace the same track after crossing the Midland Highway to return to Lake Daylesford and the start of the walk.



Lake Daylesford Weir



Lake Daylesford



Sailors Creek

This Walk Sheet describes a bushwalk, part of Bushwalking Victoria's Federation Walks 2015 program in the Daylesford and Hepburn Springs area on 24-25 October 2015. The host clubs for this event are Bayside Bushwalking Club and The Great Dividing Trail Association. Bushwalking Victoria, the host clubs, their members and walk leaders cannot accept any responsibility for errors, omissions or changes to the circumstances on which this information is based, nor can they accept responsibility for any loss or injury sustained by any person using this Walk Sheet.

Bushwalking Victoria: www.bushwalkingvictoria.org.au/

Bayside Bushwalking Club: www.baysidebush.org.au/ Great Dividing Trail Association: gdt.org.au/

19. LAKE DAYLESFORD TO BRYCES FLAT

Maps

Vicmap Topo 1:25000 A0
7723-3-N DAYLESFORD NORTH

Vicmap Topo 1:30000 A4
7723-3-4-1 7723-3-1-4
7723-3-4-2 7723-3-1-3

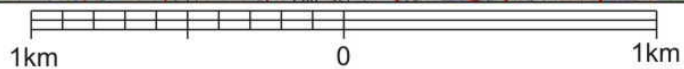
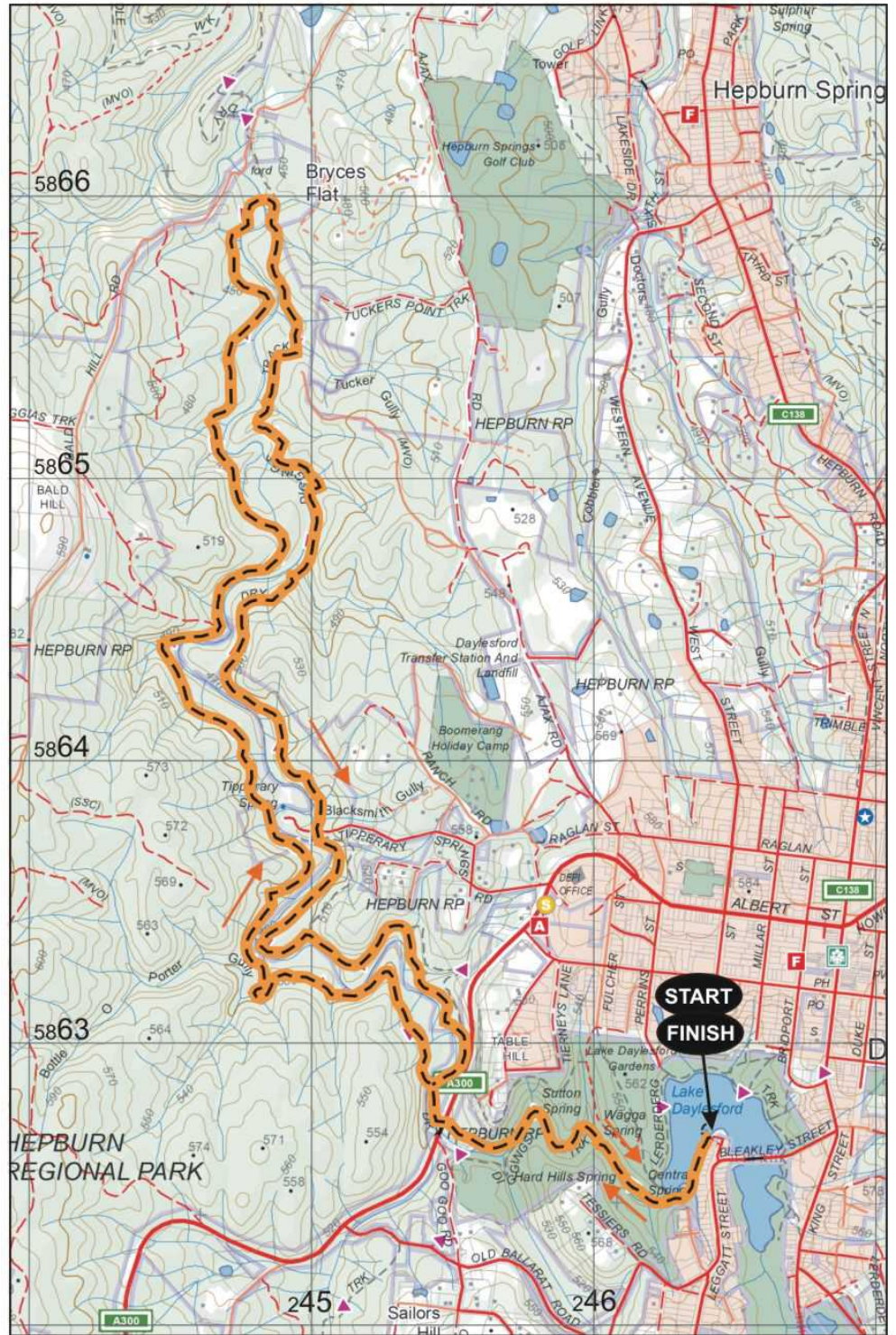
GDA94 / MGA Zone 55

Walk Surfaces	
Road	
Vehicle Track	
Foot Track	
Off Track	
Walk Route	



Map base sourced from Vicmap, Department of Environment, Land, Water and Planning (DELWP). Copyright © The State of Victoria, DELWP, 2015

The State of Victoria and its suppliers do not warrant the accuracy or completeness of information in this publication and any person using or relying upon such information does so on the basis that the State of Victoria shall bear no responsibility or liability whatsoever for any errors, faults, defects or omissions in the information.



This map is provided solely as a guide to the subject walk. The map is not intended to be used as a substitute for the applicable Vicmap Topographic map(s). Vicmap Topographic maps may be purchased in printed form from map shops and digital (PDF) maps may be purchased online at <http://services.land.vic.gov.au/maps/imf/search/Topo30Front.jsp>

