

15. CHOCOLATE WALK

Grade: *Medium* | Length: *16.6 km* | Duration: *5 hrs*
 Style: *circuit* | Total uphill: *140 m* | Gradient: *short hills to 10%*
 Path: *formed tracks, unmade roads and short off-track sections*

Introduction

Commencing on part of the Great Dividing Trail and walking north as far as the Chocolate Mill, the route passes evidence of the gold mining era in Beehive Gully. Crossing into the Hepburn Regional Park, the track continues along 4WD tracks, off-track through scrub alongside the highway and unmade back roads through small agricultural holdings up to a ridgeline where there are spectacular views over the surrounding countryside. The route continues along unmade back roads with a very steep descent to a ford before returning past a quaint miner's cottage to the cars.

Getting there

From base (Hepburn Primary School), drive east to the junction of Main Road and Route C138, and turn left (north), initially on Mineral Springs Crescent and Forest Avenue then Back Hepburn Road, following it to a T intersection with the Midland Highway (A300). Turn left (north) and drive for 1.75 km to the junction with Sawpit Gully Road on the right. At this junction there are several letterboxes in a long row where there is ample off-road parking for the start of the walk.

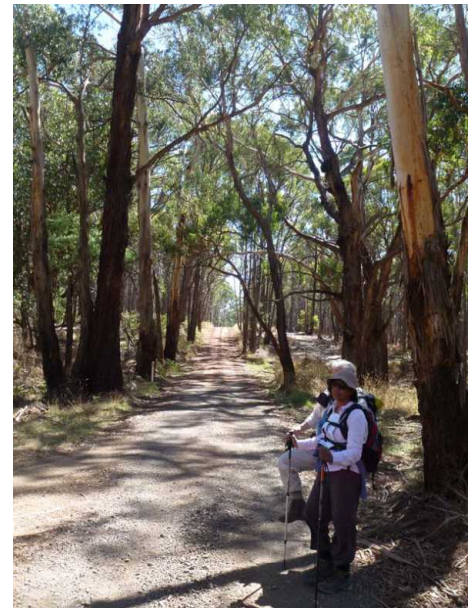
Preparations, Precautions & Hazards

Boots are essential due to the rough off-track sections and the possibility of water over the ford after wet weather. Poles are recommended because of the steep downhill section and the clay or gravel unmade roads could be slippery in wet weather. Caution is recommended when crossing Midland Highway.

Facilities There are no facilities on this walk.

Walk Description

Start the walk at the junction of Midland Highway and Sawpit Gully Road (Grid Reference (GR) 483698). Follow the Great Dividing Trail signs initially north and then swinging west for 1 km to where it crosses the Midland Highway opposite the Chocolate Mill. The track turns south outside the left-hand gate of the car park. Follow the Great Dividing Trail signs passing steep gullies formed by severe erosion from sluicing. At the junction of Mannings Road (GR 476683) there is a good spot for a break with views north to Mt Franklin. Turn left and walk south-east along the unmade road to the junction with Back Hepburn Road (GR 482676). Cross with care and walk into the Hepburn Regional Park at the park sign. Continue south along a disused track to the Midland Highway (GR 488671). Cross with care and continue south off-track along the fence line through rough ground to the junction of Richardsons Road. Turn left and walk east for 1 km along this unmade road passing small farms with varied agricultural land use. Turn left (north) into Scotts Lane and walk along the lane through open forest. Walk steeply up to the junction with Porcupine Ridge Road (GR 510683) and admire the sculptured mail boxes at the corner.



Scotts Lane



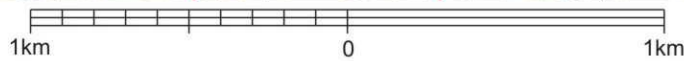
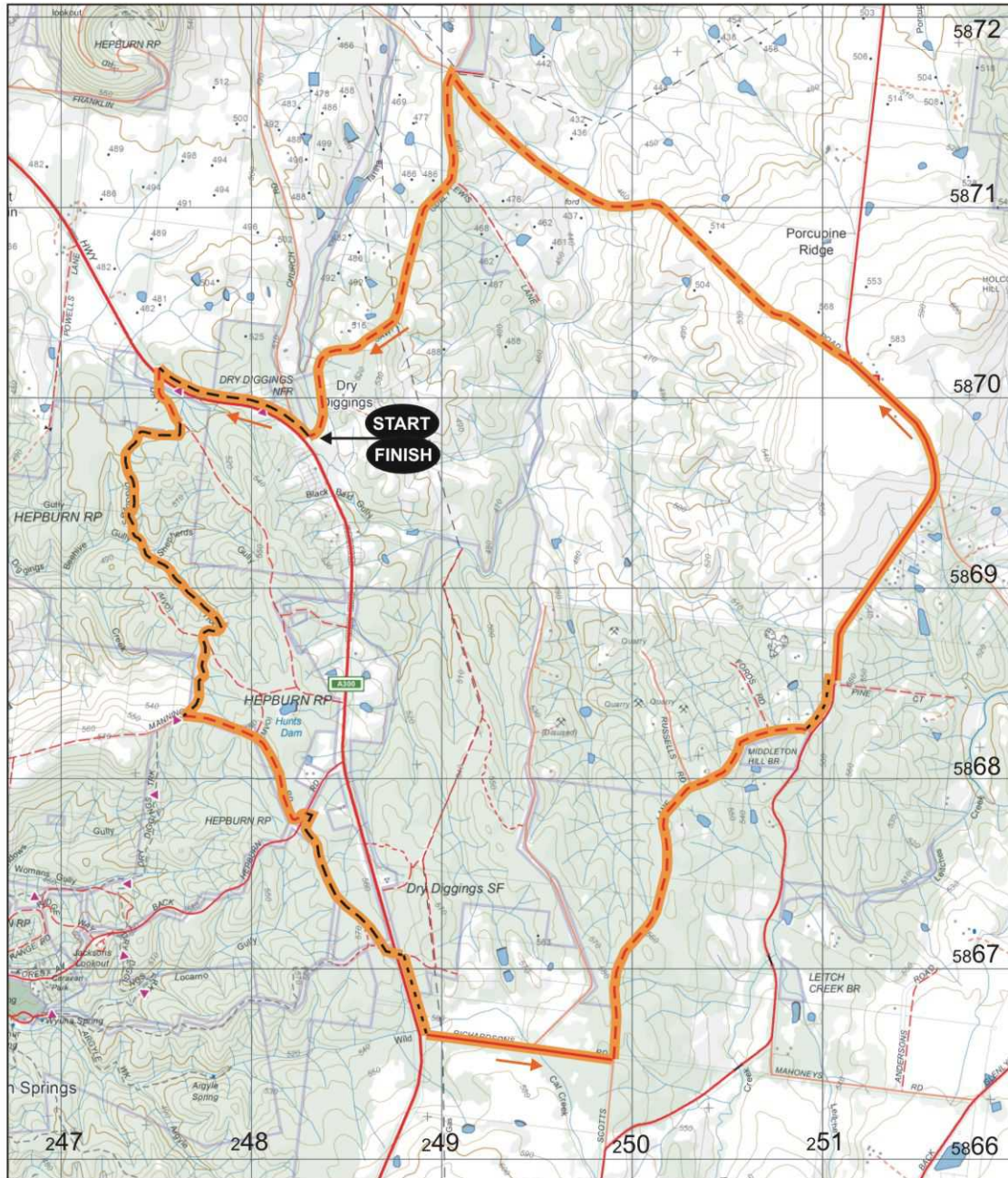
Turn left (north) and walk along the rough ground beside the property fence line, thus avoiding the roadside. Cross at the junction with Pine Court (GR 511685) and walk along the road on the verge. Continue along the ridgeline to a great viewpoint overlooking the surrounding countryside for a lunch break (GR 514700). After lunch, continue along Porcupine Ridge Road to where it forks. Take the left fork marked Leslies Road (GR 512703) which is an unsealed rough gravel lane. A very steep rough descent follows for 1.7 km down to a ford over Middleton Creek. Gradually ascend to the junction of Sawpit Gully Road (GR 491717). Turn left (south) and follow this road past small farm holdings and a quaint miner's cottage and orchard back to the cars.

This Walk Sheet describes a bushwalk, part of Bushwalking Victoria's Federation Walks 2015 program in the Daylesford and Hepburn Springs area on 24-25 October 2015. The host clubs for this event are Bayside Bushwalking Club and The Great Dividing Trail Association. Bushwalking Victoria, the host clubs, their members and walk leaders cannot accept any responsibility for errors, omissions or changes to the circumstances on which this information is based, nor can they accept responsibility for any loss or injury sustained by any person using this Walk Sheet.

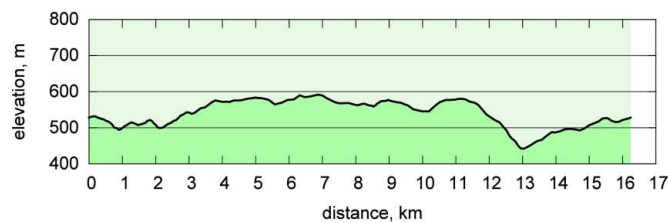
Bushwalking Victoria: www.bushwalkingvictoria.org.au/

Bayside Bushwalking Club: www.baysidebush.org.au/ Great Dividing Trail Association: gdt.org.au/

15. CHOCOLATE WALK



- Walk Surfaces**
- Road ————
 - Vehicle Track - - - - -
 - Foot Track - - - - -
 - Off Track ······
 - Walk Route ————



Maps

Vicmap Topo 1:25000 A0
7723-3-N DAYLESFORD NORTH

Vicmap Topo 1:30000 A4
7723-3-1-4 7723-3-1-1
7723-3-1-3 7723-3-1-2

GDA94 / MGA Zone 55



Map base sourced from Vicmap, Department of Environment, Land, Water and Planning (DELWP). Copyright © The State of Victoria, DELWP, 2015

The State of Victoria and its suppliers do not warrant the accuracy or completeness of information in this publication and any person using or relying upon such information does so on the basis that the State of Victoria shall bear no responsibility or liability whatsoever for any errors, faults, defects or omissions in the information.

This map is provided solely as a guide to the subject walk. The map is not intended to be used as a substitute for the applicable Vicmap Topographic map(s). Vicmap Topographic maps may be purchased in printed form from map shops and digital (PDF) maps may be purchased online at <http://services.land.vic.gov.au/maps/imf/search/Topo30Front.jsp>