

13. BOOTS GULLY – CHARLESFORD MINE

Grade: *Medium* | Length: *15 km* | Duration: *4.5 hrs*
Style: *circuit* | Total uphill: *220 m* | Gradient: *generally <10%*
Path: *roads, tracks and off-track on water races*

Introduction

The area is named for the extinct volcano, Bald Hill, which spread its lava north-westwards to form the farming lands of basalt amidst ancient ordovician slates and shales. These form the gold-bearing quartz underlying the central Victorian goldfields. The walk encompasses several of the smaller goldfields of the Daylesford area. These goldfields required water to wash the pay dirt, which was supplied by water races. Some races conveyed water from up to 20 km away near Twin Bridges. A natural spring, Hendersons, in Boots Gully and a derelict mid-twentieth century slate mine are visited on the walk.

Getting there

On exiting the Hepburn Primary School turn left (north) on Hepburn-Newstead Road and follow this for 5 km to Basalt Road opposite the Lavendula complex. Turn left onto Basalt Road and proceed for a further 5 km. Pass through the Boots Gully area (it's clearly marked with lots of boots) and stop just at the edge of the open farmland. Parking is nearby, just off-road or 100 m before the edge of the open farm-land (Grid Reference (GR) 424677).

Preparations, Precautions & Hazards

The walk is mostly off-track and on bush tracks with clay surfaces which become slippery after rain or showers, therefore a walking pole is required by all walkers for safety. There may be snakes and bee hives in season.

Facilities: No facilities are available on this walk.

Walk Description

From the starting point (GR 424677) proceed south for 0.9 km on Basalt Road to the junction with Old Werona Road (GR 425669). Turn south-west and proceed 500 m to a four-way track Junction (GR 421667) and take the right fork south-west. Follow this minor track to the Charlesford Dam and Mine. The mine is about 200 m west of the track junction at GR 422656. Take time to enjoy the ruins of mining operations.

After inspecting the ruins walk back to the track junction and continue on the track for about 1.7 km to Basalt Road at GR 427652. Along this section of Boots Gully there are many ruins. Cross over the road to the start of Humbug Track heading south-east. Follow this track for 2 km to a minor track junction at GR 436639. Take the track east for 300 m to Bald Hill Road at GR 439638.



Slate Mine in Boots Gully



Charlesford Mine Chimney Ruin

Proceed generally north on Bald Hill Road for 1.9 km to the Excelsior Track junction at GR 443656. Turn south-west onto the track and proceed for 400 m to GR 441657. In the gully to the north is a water race. Follow the race north along the contours for 800 m to a gully at GR 441660. Walk north up the gully to a track intersection at GR 441662. Take the track north 450 m to GR 440667. Turn left off the track and head downhill to meet a water race at GR 439666 at the head of Long Gully. Turn right (north) and follow the race on the west side of the gully until it meets Blowhole Track at GR 434673. Continue west on this track for 100 m and pass Yam Gully Road on the right. Turn right at the next junction (GR 431672). Proceed for about 1.2 km to meet Basalt Road at GR 430681. Turn left and follow Basalt Road down into Boots Gully (GR 426679). Turn right onto Henderson Spring Track and follow the water race to the spring. The spring water may be sampled here. Look across Boots Gully and you should see a faint track, follow this, or simply walk straight across the gully south-west to an old vehicular track. Proceed downhill to the right to the old Boots Gully Slate Mine. Return uphill to where you met the track and continue along the track to the walk start.

This Walk Sheet describes a bushwalk, part of Bushwalking Victoria's Federation Walks 2015 program in the Daylesford and Hepburn Springs area on 24-25 October 2015. The host clubs for this event are Bayside Bushwalking Club and The Great Dividing Trail Association. Bushwalking Victoria, the host clubs, their members and walk leaders cannot accept any responsibility for errors, omissions or changes to the circumstances on which this information is based, nor can they accept responsibility for any loss or injury sustained by any person using this Walk Sheet.

Bushwalking Victoria: www.bushwalkingvictoria.org.au/

Bayside Bushwalking Club: www.baysidebush.org.au/ Great Dividing Trail Association: gdt.org.au/

13. BOOTS GULLY – CHARLESFORD MINE

Maps

Vicmap Topo 1:25000 A0
7723-3-N DAYLESFORD NORTH

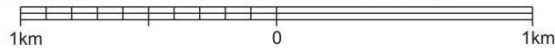
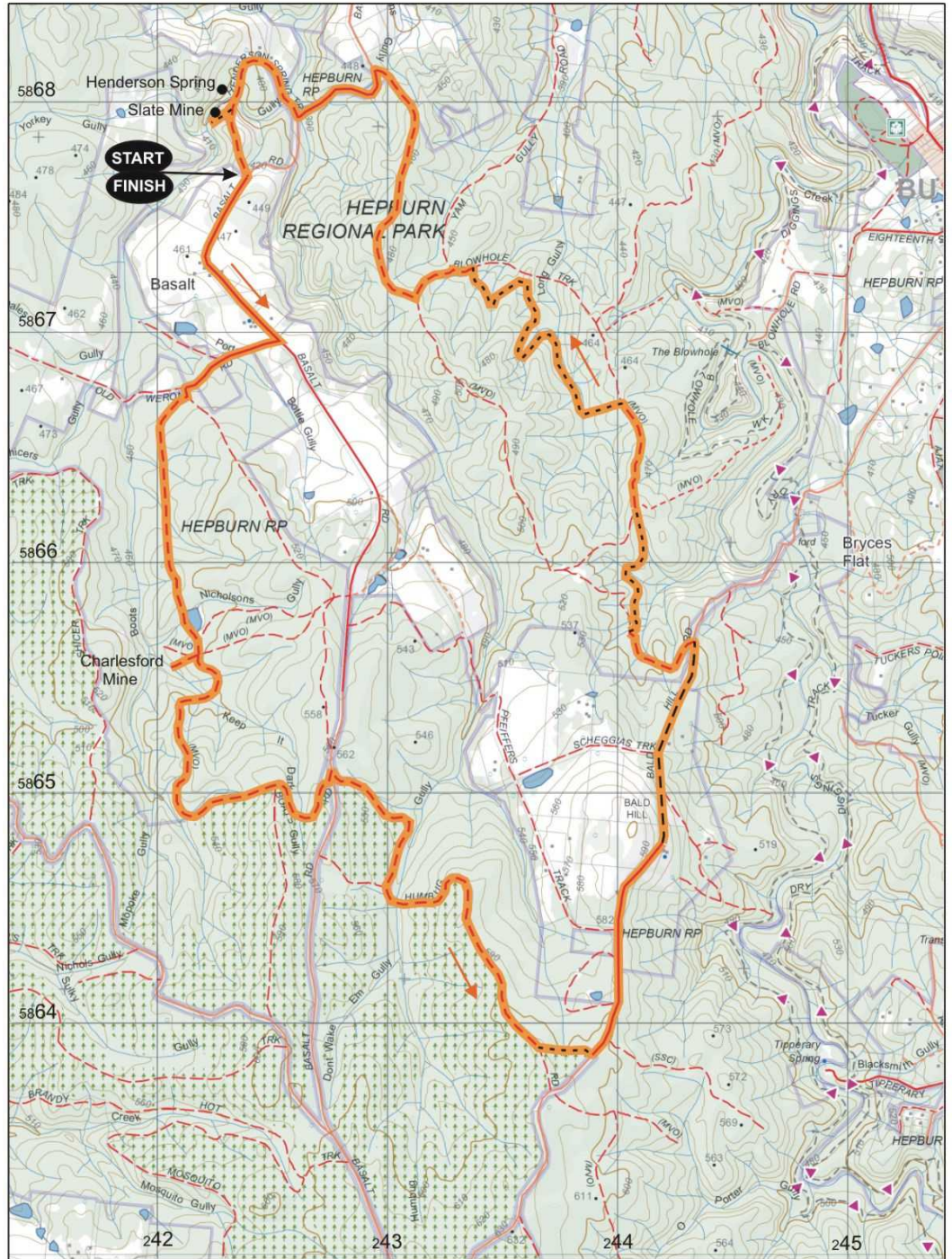
Vicmap Topo 1:30000 A4
7723-3-4-1
7723-3-4-2

GDA94 / MGA Zone 55

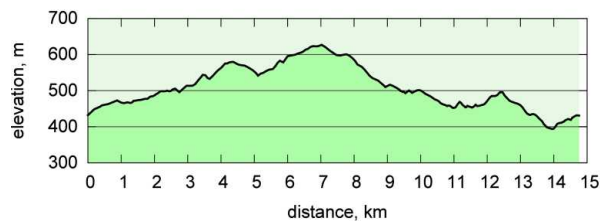


Map base sourced from Vicmap, Department of Environment, Land, Water and Planning (DELWP). Copyright © The State of Victoria, DELWP, 2015

The State of Victoria and its suppliers do not warrant the accuracy or completeness of information in this publication and any person using or relying upon such information does so on the basis that the State of Victoria shall bear no responsibility or liability whatsoever for any errors, faults, defects or omissions in the information.



Walk Surfaces	
Road	
Vehicle Track	
Foot Track	
Off Track	
Walk Route	



This map is provided solely as a guide to the subject walk. The map is not intended to be used as a substitute for the applicable Vicmap Topographic map(s). Vicmap Topographic maps may be purchased in printed form from map shops and digital (PDF) maps may be purchased online at <http://services.land.vic.gov.au/maps/imf/search/Topo30Front.jsp>