

12. JACKSONS LOOKOUT, HUNTS DAM AND MINERAL SPRINGS

Grade: *Medium* | Length: *11 km* | Duration: *3.5 hrs*
Style: *circuit* | Total uphill: *200 m* | Gradient: *short steep hills < 20%*
Path: *generally well formed tracks with some rough rocky surfaces*

Introduction

The walk starts at the Hepburn Primary School and visits the Hepburn Springs Mineral Reserve. Sections of the walk follow the Dry Diggings Track, which is a leg of the Great Dividing Trail (GDT). The walk is through open stringybark and box forest. Many parts of the track are rocky and narrow with short steep hills. Excellent views are provided from Jacksons Lookout. Hunts dam is visited, which was built in the 1860s. There are some mineral springs to sample the waters at the end of the walk at Hepburn Mineral Springs Reserve.

Getting there

The walk starts at the base (Hepburn Primary school).

Preparations, Precautions & Hazards

Many of the tracks are single file, rocky and rough. They could be slippery in wet weather. Boots are recommended. Care must be taken when crossing the Back Hepburn Road and Main Road as there are no defined pedestrian crossings.

Facilities

There are toilets and shelter at the Hepburn Mineral Springs Reserve.

Walk Description

From base (Hepburn Primary school) walk east along the footpath of Main Road and turn left (north) at the T junction. Follow the road as it becomes Forest Avenue, turn right into the car park of Hepburn Springs Reserve and walk to the end of the car park where there is track and a sign to Jacksons Lookout. This is 1.25 km from the start of the walk. Follow the track east and then north in a long steady climb on a narrow track until it reaches Jacksons Lookout (Grid Reference (GR) 472671). There are excellent views from the tower. Cross Back Hepburn Road and continue ahead on the track for a short distance to a junction with the sign-posted GDT and Dry Diggings Track. Turn right (east) and continue on up Womans Gully a short distance where the GDT leaves the creek and follows a vehicle track north up the hill to the ridge top. Continue on the track until it intersects with Manning Road at GR 475683. Turn right (north-east) and walk along Manning Road for 150 m to where the sign-posted GDT track re-enters the forest on the left. Follow the track for 400 m to an intersecting vehicle track and leave the GDT here and turn right (south-east) to follow the vehicle track. Continue 500 m until you reach Hunts Dam (GR 482684). Walk across the overgrown dam wall to a track and turn right and follow it for 200 m to where a vehicle track crosses.



Jacksons Lookout



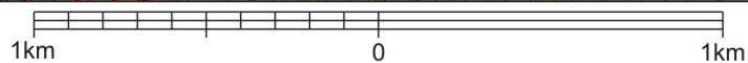
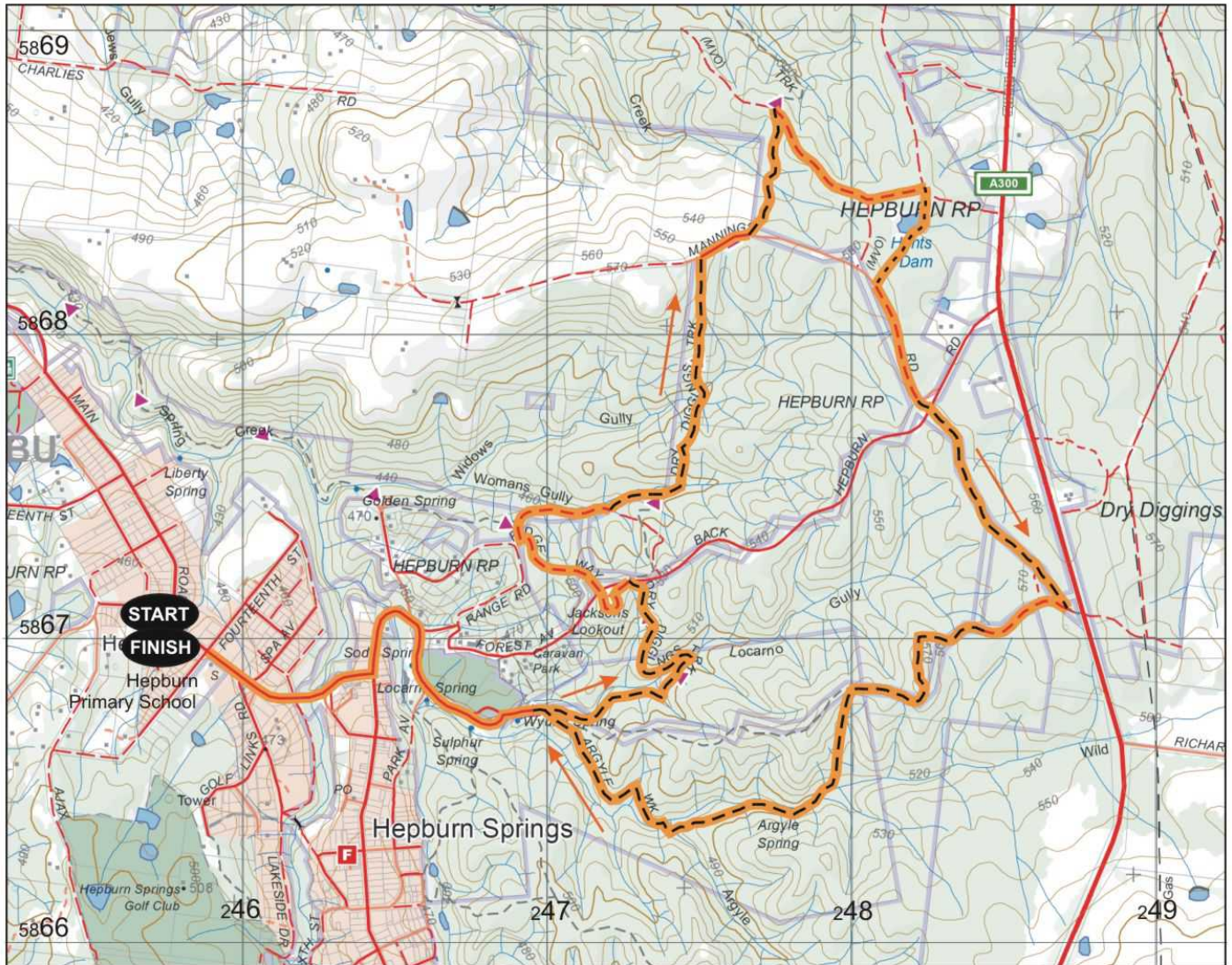
Turn left and walk 40 metres to Manning Road. Turn left (south-east) and follow Manning Road for 500 m to Back Hepburn Road. Cross and continue south-east on a vehicle track for almost 1 km until you reach the Midland Highway at GR 483678 and take the intersecting track south-west. (Do not cross the highway.) After approximately 1 km turn left on an indistinct vehicle track (a short green post marks the track). The track descends steeply to Wildcat Creek and Argyle Spring hand pump (GR 478664). Continue for 1 km from Argyle Spring pump to a track junction. Take the left track for 400 m to Wyuna Spring. It is then only 100 m to the car park in Hepburn Springs Reserve. Return back to the base following the same route as earlier.

This Walk Sheet describes a bushwalk, part of Bushwalking Victoria's Federation Walks 2015 program in the Daylesford and Hepburn Springs area on 24-25 October 2015. The host clubs for this event are Bayside Bushwalking Club and The Great Dividing Trail Association. Bushwalking Victoria, the host clubs, their members and walk leaders cannot accept any responsibility for errors, omissions or changes to the circumstances on which this information is based, nor can they accept responsibility for any loss or injury sustained by any person using this Walk Sheet.

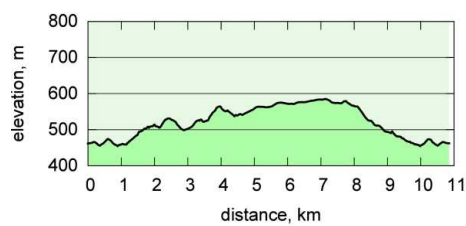
Bushwalking Victoria: www.bushwalkingvictoria.org.au/

Bayside Bushwalking Club: www.baysidebush.org.au/ Great Dividing Trail Association: gdt.org.au/

12. JACKSONS LOOKOUT, HUNTS DAM AND MINERAL SPRINGS



- Walk Surfaces**
- Road ———
 - Vehicle Track - - - - -
 - Foot Track - - - - -
 - Off Track · · · · ·
 - Walk Route ———



Maps

Vicmap Topo 1:25000 A0
 7723-3-N DAYLESFORD NORTH
 Vicmap Topo 1:30000 A4
 7723-3-1-4
 7723-3-1-3
GDA94 / MGA Zone 55



Map base sourced from Vicmap, Department of Environment, Land, Water and Planning (DELWP). Copyright © The State of Victoria, DELWP, 2015

The State of Victoria and its suppliers do not warrant the accuracy or completeness of information in this publication and any person using or relying upon such information does so on the basis that the State of Victoria shall bear no responsibility or liability whatsoever for any errors, faults, defects or omissions in the information.

This map is provided solely as a guide to the subject walk. The map is not intended to be used as a substitute for the applicable Vicmap Topographic map(s). Vicmap Topographic maps may be purchased in printed form from map shops and digital (PDF) maps may be purchased online at <http://services.land.vic.gov.au/maps/imf/search/Topo30Front.jsp>