

## 11. MOUNT FRANKLIN TO JIM CROW CREEK

Grade: *Medium* | Length: *11 km* | Duration: *3 hrs*  
Style: *car shuffle* | Total uphill: *120 m*  
Gradient: *ascent <20%, descent short sections >20%*  
Path: *sealed and gravel roads and bush tracks*

### Introduction

This walk, along mostly minor roads and roadsides, in mostly cleared country from the top of Mount Franklin to Jim Crow Creek near Franklinford, seeks to interpret the volcanic plains country and changes to the landscape during the contact period between 1838 and the settler re-discovery of gold in 1851. It traverses and interprets much of the former Mt Franklin Aboriginal Protectorate (1842-9), one of the best-documented (but not publicly recognized) sites of early Aboriginal contact in south-eastern Australia. The first and final parts of the walk include a walk around the Mount Franklin crater rim, and Clarkes Pool, on a billabong on Jim Crow Creek.

### Getting there

From base (Hepburn Primary School), drive east to the junction of Main Road and Route C138, and turn left (north), initially on Mineral Springs Crescent and Forest Avenue then Back Hepburn Road, following it to a T intersection with the Midland Highway (A300). Turn left (north) and drive for about 4.3 km, to Mount Franklin Road on the right. Follow this road 1.5 km to the end within the volcanic crater. This is the start of the walk.

Cars needed to be at the finish of the walk for the car shuffle should return via Mount Franklin Road to the Midland Highway and turn right. Drive north for just over 1 km and turn left onto Powell Extension Road. Continue for about 3 km to Franklinford and turn left onto Clarkes Road. Follow this road to the end at Clarkes Pool and the end of the walk.

### Preparations, Precautions & Hazards

Take care crossing roads, e.g. the Midland Highway, and watch for road traffic while walking along the side of sealed or gravel roads. Some steeper gravel roads could be slippery.

### Facilities

There are toilets and water at Mount Franklin crater and the Franklinford Cemetery.

### Walk Description

Start the walk at the car park inside the Mount Franklin crater (Grid Reference (GR) 473719). Follow the walking track which initially starts north-west and curves right around to south-east before swinging left and up a steep climb, including some steps, to meet a gravel road on the rim to the north of the crater. Walk 1.5 km on this road, past the fire tower, around the rim and down to the bottom of the crater and the car park at the start of the walk. Leave the crater via the bitumen Mount Franklin Road and walk 1.5 km back to Midland Highway. Cross to the left (west) side of the highway with

care and walk 500 m to Carrolls Lane at GR 461721. Follow this gravel road (west) for 2 km to the junction with Hepburn-Newstead Road at GR 440722. Turn right and walk along the side of the bitumen road for 2.5 km to the junction with South Street at GR 438746. Turn left along South Street at the Franklinford sign, passing the Aboriginal school site, to Clarkes Road. Turn right for about 50 m then left to take a short side trip to both the Franklinford Spring and Cemetery before returning to Clarkes Road. Turn right and continue for about 800 m south-west to the end of Clarkes Road at Clarkes Pool on Jim Crow Creek (GR 429741). This is the end of the walk. Execute the car shuffle to return the walkers back to base.



Clarkes Pool on Jim Crow Creek



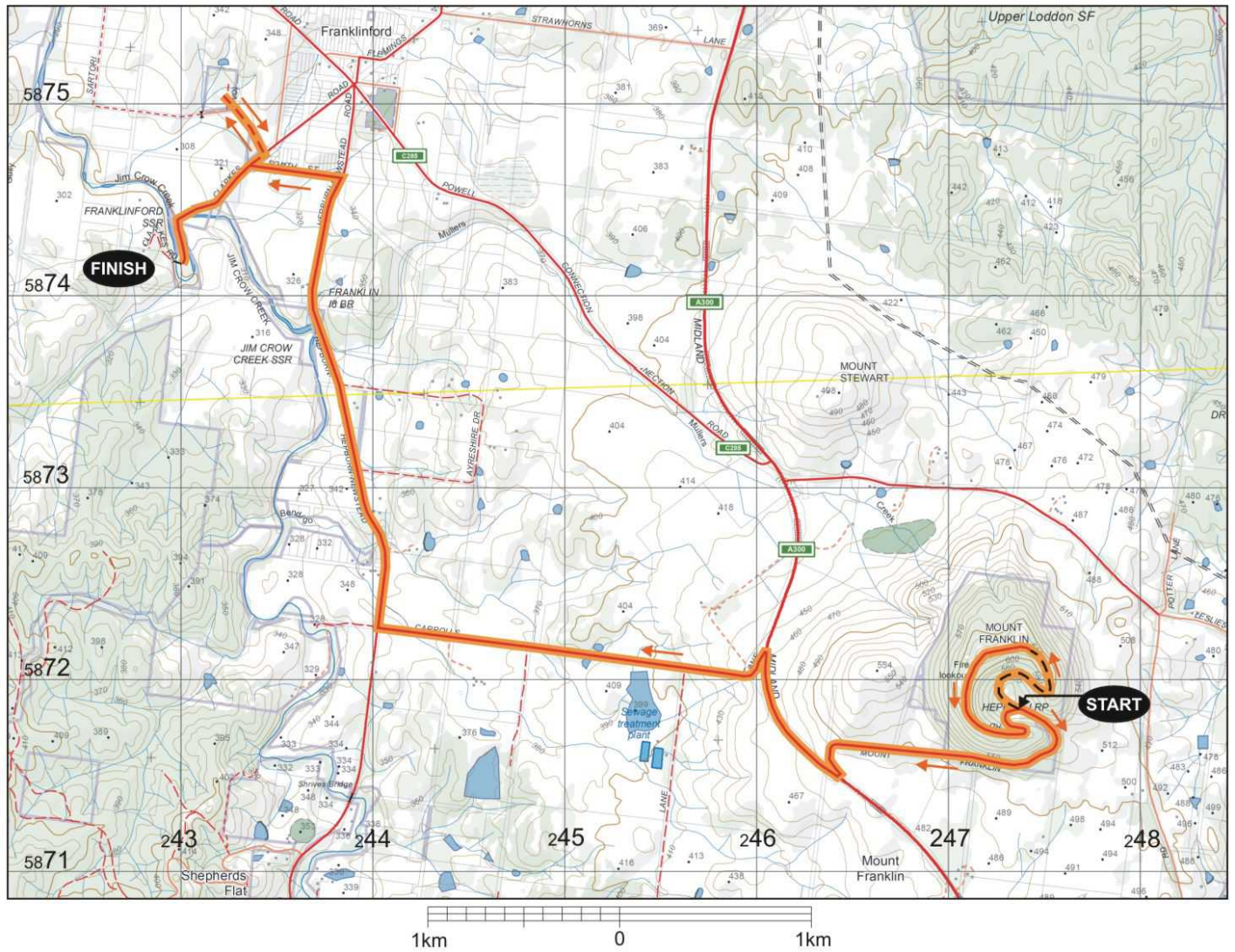
View north from Mt Franklin

This Walk Sheet describes a bushwalk, part of Bushwalking Victoria's Federation Walks 2015 program in the Daylesford and Hepburn Springs area on 24-25 October 2015. The host clubs for this event are Bayside Bushwalking Club and The Great Dividing Trail Association. Bushwalking Victoria, the host clubs, their members and walk leaders cannot accept any responsibility for errors, omissions or changes to the circumstances on which this information is based, nor can they accept responsibility for any loss or injury sustained by any person using this Walk Sheet.

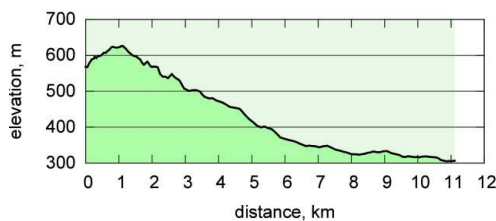
Bushwalking Victoria: [www.bushwalkingvictoria.org.au/](http://www.bushwalkingvictoria.org.au/)

Bayside Bushwalking Club: [www.baysidebush.org.au/](http://www.baysidebush.org.au/) Great Dividing Trail Association: [gdt.org.au/](http://gdt.org.au/)

# 11. MOUNT FRANKLIN TO JIM CROW CREEK



- Walk Surfaces**
- Road ———
  - Vehicle Track - - - - -
  - Foot Track - - - - -
  - Off Track . . . . .
  - Walk Route ———



### Maps

Vicmap Topo 1:25000 A0  
 7723-4-S CASTLEMAINE SOUTH  
 7723-3-N DAYLESFORD NORTH  
 Vicmap Topo 1:30000 A4  
 7723-4-3-2 7723-4-2-3  
 7723-3-4-1 7723-3-1-4  
**GDA94 / MGA Zone 55**



Map base sourced from Vicmap, Department of Environment, Land, Water and Planning (DELWP). Copyright © The State of Victoria, DELWP, 2015

The State of Victoria and its suppliers do not warrant the accuracy or completeness of information in this publication and any person using or relying upon such information does so on the basis that the State of Victoria shall bear no responsibility or liability whatsoever for any errors, faults, defects or omissions in the information.

This map is provided solely as a guide to the subject walk. The map is not intended to be used as a substitute for the applicable Vicmap Topographic map(s). Vicmap Topographic maps may be purchased in printed form from map shops and digital (PDF) maps may be purchased online at <http://services.land.vic.gov.au/maps/imf/search/Topo30Front.jsp>