

7. BLOWHOLE TO SHEPHERDS FLAT

Grade: *Medium* | Length: *14.2 km* | Duration: *5 hrs*
Style: *circuit* | Total uphill: *550 m* | Gradient: *short hills to 20%*
Path: *Mostly on walking tracks and sealed roads with some off-track*

Introduction

The walk traverses typical goldfields bushland with varied topography passing a number of interesting historical features. These include the Blowhole, gold diggings, aqueduct/water race and the home of Australian cricket bat willow.

Getting there

From the base at Hepburn Primary School, turn left into Hepburn-Newstead Road and continue for 700 m to Eighteenth Street. Turn left and follow this road for 800 m and turn right into Blowhole Road. Continue for a further 600 m to the Blowhole parking area.

Preparations, Precautions & Hazards

Walking tracks and steps, which are steep in short sections, may be slippery during or after wet weather. There is a stream crossing, which may be up to 10 m wide following heavy rain. Some off-track sections are through moderately thick scrub. Care must be taken when walking adjacent to Hepburn-Newstead Road. Good walking shoes or boots are required and walking poles may be helpful.

Facilities

There are no facilities on this walk.

Walk Description

Start the walk at the Blowhole car parking area (Grid Reference (GR) 446669) and follow the marked Great Dividing Trail which descends to Sailors Creek. Cross the creek taking care during or after heavy rain. After crossing the creek, climb to a junction of four tracks (GR 439671). Take the right-hand vehicle track heading north then north-east and from GR 446680 in a northerly direction. After 2.9 km (GR 444695), turn west for 150 m to join Wayman Road. Turn right (north) and follow it to the junction with Hepburn-Newstead Road. Continue along on the grass verge in a north-westerly direction for 1.4 km. Leave the sealed road at the Willow Café and follow Shepherds Flat-Weroona Road for 700 m before taking a minor track heading south at GR 434709. Continue in a southerly direction off-track along a spur for about 1 km before meeting a track (GR 431700).



Blowhole steps



Typical track through open forest

Turn left and follow the track south-east and then south for 1.6 km keeping a watchful eye for open mine shafts until joining Basalt Gully Road (GR 429687). Follow the gravel road for 600 m then make a left turn along Boots Gully track with its steady climb for 1.2 km in a southerly direction. Turn east-north-east along Blowhole Track for 200 m before turning east-south-east (GR 433673) along a poorly defined track which after 200 m becomes more clearly defined. Continue a further 800 m to a track junction visited earlier in the walk (GR 439671). Turn right along the track heading south-east and follow the remains of a former water race, which meanders along a contour in a south-easterly direction. Turn in a north-north-easterly direction to the Blowhole viewing site and then return to the car park.

This Walk Sheet describes a bushwalk, part of Bushwalking Victoria's Federation Walks 2015 program in the Daylesford and Hepburn Springs area on 24-25 October 2015. The host clubs for this event are Bayside Bushwalking Club and The Great Dividing Trail Association. Bushwalking Victoria, the host clubs, their members and walk leaders cannot accept any responsibility for errors, omissions or changes to the circumstances on which this information is based, nor can they accept responsibility for any loss or injury sustained by any person using this Walk Sheet.

Bushwalking Victoria: www.bushwalkingvictoria.org.au/

Bayside Bushwalking Club: www.baysidebush.org.au/ Great Dividing Trail Association: gdt.org.au/

7. BLOWHOLE TO SHEPHERDS FLAT

Maps

Vicmap Topo 1:25000 A0
7723-3-N DAYLESFORD NORTH

Vicmap Topo 1:30000 A4
7723-3-4-1

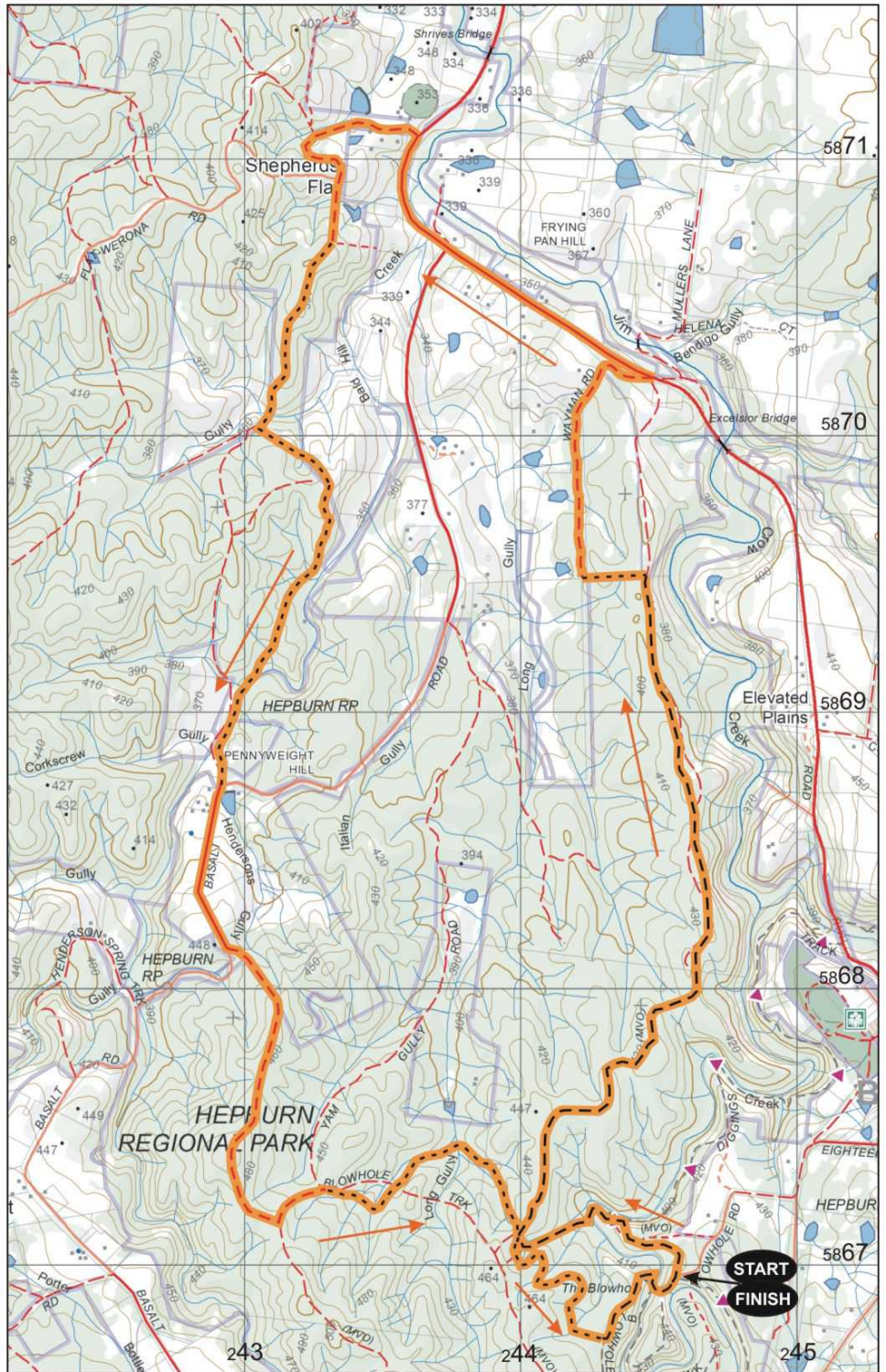
GDA94 / MGA Zone 55

Walk Surfaces	
Road	
Vehicle Track	
Foot Track	
Off Track	
Walk Route	



Map base sourced from Vicmap, Department of Environment, Land, Water and Planning (DELWP). Copyright © The State of Victoria, DELWP, 2015

The State of Victoria and its suppliers do not warrant the accuracy or completeness of information in this publication and any person using or relying upon such information does so on the basis that the State of Victoria shall bear no responsibility or liability whatsoever for any errors, faults, defects or omissions in the information.



This map is provided solely as a guide to the subject walk. The map is not intended to be used as a substitute for the applicable Vicmap Topographic map(s). Vicmap Topographic maps may be purchased in printed form from map shops and digital (PDF) maps may be purchased online at <http://services.land.vic.gov.au/maps/imf/search/Topo30Front.jsp>

