

3. MOLLONGHIP TO BARKSTEAD

Grade: *Easy/Medium* | Length: *13 km* | Duration: *3.5 hrs*
Style: *circuit* | Total uphill: *260 m* | Gradient: *gentle hills <10%*
Path: *4WD bush tracks, with off-track in open forest*

Introduction

This is a walk through the Wombat Forest on the Great Divide featuring many gold rush artefacts. The remnants of the 29 km long Andersons timber tramway line and the sawdust footprint of the Andersons sawmill can be seen in the firewood cutters' hamlet of Barkstead, which was at the end of the tramway line. The walk also takes in a gold mining dam and the stone wall with remnants of the Barkstead stamping battery hidden in the forest by Cave Creek to the north of Barkstead.

Getting there

From the Base (Hepburn Primary School), turn right on to Main Road. Follow this road until it turns right (south) and becomes C138. Continue on for about 4 km to the roundabout at the intersection with the Midland Highway in Daylesford. Turn right and continue on the Midland Highway for 12 km until the turnoff to Mollonghip on the left 150 m past Blampied. Turn left and follow the road for 13 km and turn left at crossroads into Mollonghip. Go 3 km to a T junction, then turn left into McPhans Road. Continue for 2.2 km to the junction with Gleasons Road, Slaters Road and The Wallaby Track at Grid Reference (GR) 396489. This is the start of the walk.

Preparations, Precautions & Hazards

The walk is on tracks or old dirt 4WD logging tracks with some off-track. Boots are not necessary and runners, or sturdy walking shoes, would be suitable.

Facilities: None

Walk Description

From the start walk north along Slaters Road for about 400 m to a bush track on the left, which continues north, steadily downhill through forest to a junction with unsigned Dredge Track. Turn south-east onto Dredge Track and follow this track for 750 m until the track ends at a T junction with Pinchgut Road (GR 406502). Turn left (north) and walk downhill and cross a creek taking a turn to the right (north-east) uphill onto signed Mullins Track (GR 406508). Follow this track uphill for 1 km to a dam. Continue north-east uphill from the dam on Mullers Dam Track for another 1 km until the track ends on Barkstead Road (GR 424511). Turn left (north) for 200 m on the road before deviating north-east on a faint bush track leading down to a small breached dam. Immediately to the north-east of the dam is the old Barkstead mine wall which is over 3 m high but obscured by exotic trees.



Regrowth on Wallaby Track



Andersons Tramway Cutting

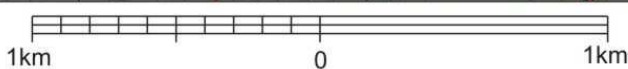
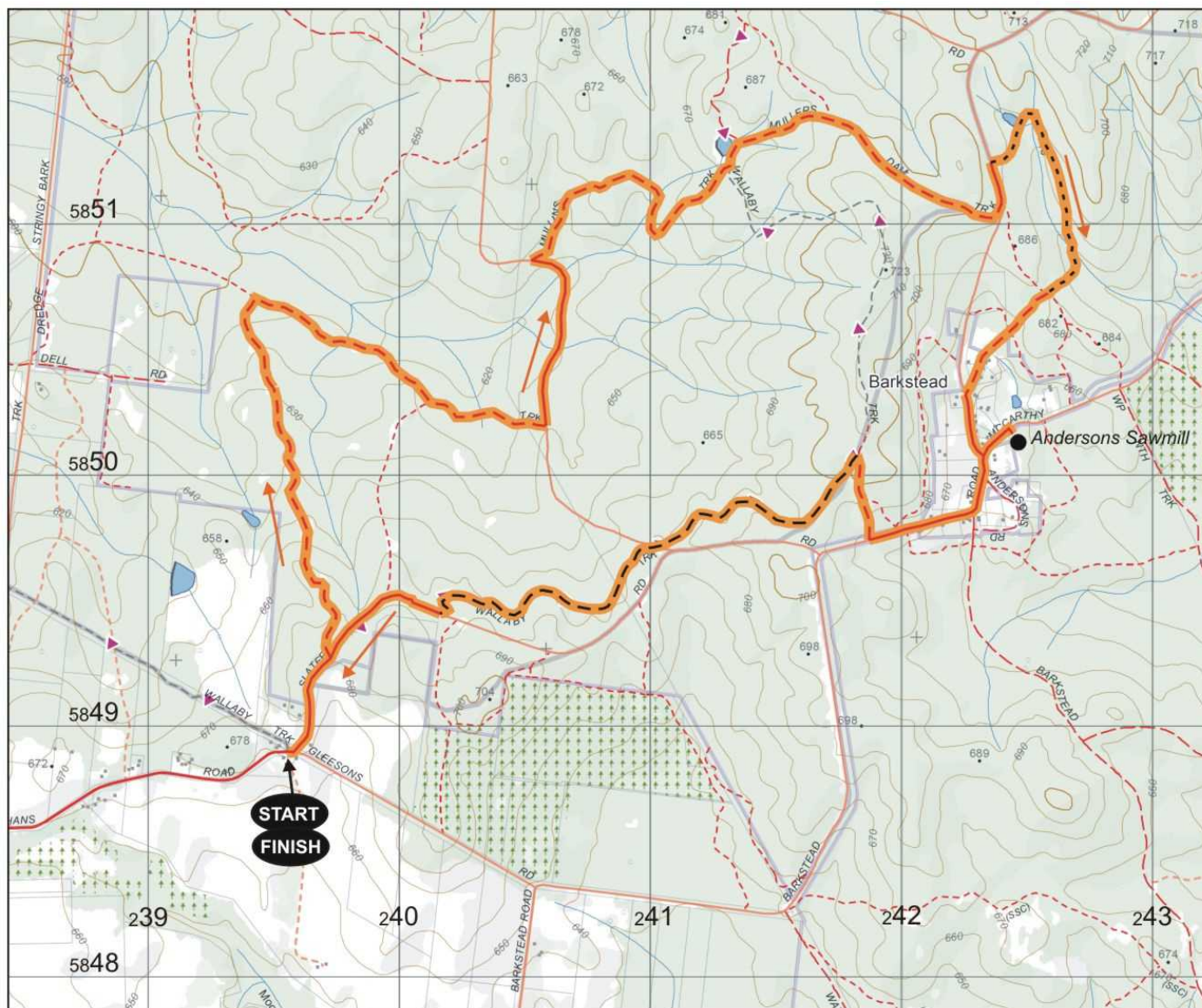
Go uphill on the ridge north of the mine wall for 50 m (off-track) then due east down to cross Cave Creek which is likely to be dry. Follow the creek south on the east bank through forest for 500 m off-track to pick up an unsigned track leading south-west (GR 427508). Follow south-west for about 500 m, crossing two other tracks, until you reach paddocks at Barkstead and continue south-west along an easement to pick up signed Cowans Lane that takes you to Barkstead Road. Turn left (south) onto bitumen then left (east) into signed McCarthy Road. After 150 m, cross the verge on the south side for 55 m to the Andersons sawmill site at GR 424501 – now only spongy sawdust and some footings. From the sawmill site head back west along McCarthy Road to the junction with Barkstead Road. Follow the bitumen through Barkstead, south then west uphill for 700 m and take a faint track north at GR 419498 to meet up with the gold posts of the Wallaby Track section of the Goldfields Track. Make sure you turn left (south-west) and follow the signposts, and route of Andersons tramway for 1 km to Pinchgut Road. Cross the road to a gold signpost and continue south-west along the Wallaby Track for another 1 km to Slaters Road at GR 402395. Follow the signposts west then south for 900 m back to the start of the walk.

This Walk Sheet describes a bushwalk, part of Bushwalking Victoria's Federation Walks 2015 program in the Daylesford and Hepburn Springs area on 24-25 October 2015. The host clubs for this event are Bayside Bushwalking Club and The Great Dividing Trail Association. Bushwalking Victoria, the host clubs, their members and walk leaders cannot accept any responsibility for errors, omissions or changes to the circumstances on which this information is based, nor can they accept responsibility for any loss or injury sustained by any person using this Walk Sheet.

Bushwalking Victoria: www.bushwalkingvictoria.org.au/

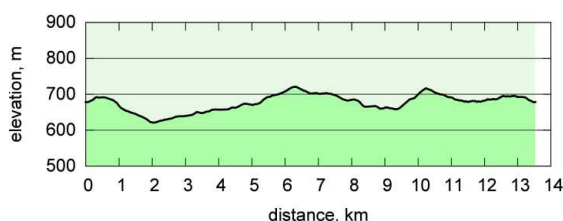
Bayside Bushwalking Club: www.baysidebush.org.au/ Great Dividing Trail Association: gdt.org.au/

3. MOLLONGHIP TO BARKSTEAD



Walk Surfaces

Road	
Vehicle Track	
Foot Track	
Off Track	
Walk Route	



Maps

Vicmap Topo 1:25000 A0
7723-3-S DAYLESFORD SOUTH

Vicmap Topo 1:30000 A4
7723-3-3-3 7723-3-3-2

GDA94 / MGA Zone 55



Map base sourced from Vicmap, Department of Environment, Land, Water and Planning (DELWP).
Copyright © The State of Victoria, DELWP, 2015

The State of Victoria and its suppliers do not warrant the accuracy or completeness of information in this publication and any person using or relying upon such information does so on the basis that the State of Victoria shall bear no responsibility or liability whatsoever for any errors, faults, defects or omissions in the information.

This map is provided solely as a guide to the subject walk. The map is not intended to be used as a substitute for the applicable Vicmap Topographic map(s). Vicmap Topographic maps may be purchased in printed form from map shops and digital (PDF) maps may be purchased online at <http://services.land.vic.gov.au/maps/imf/search/Topo30Front.jsp>